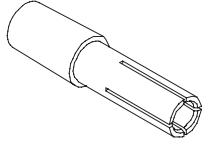
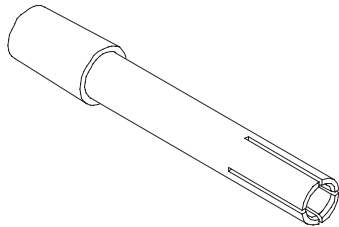


# ADJUSTABLE CHUCKS *Standard*

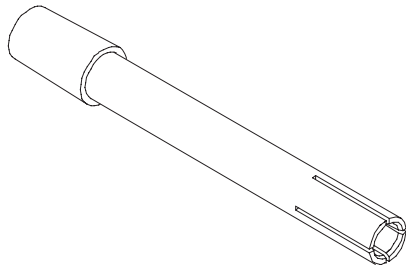
## Standard, Long & Extra Long Chucks



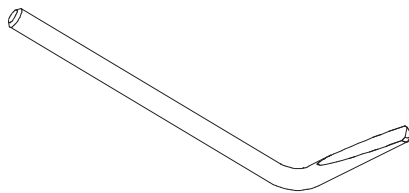
**Standard Chuck**  
2.50 in. long



**Long Chuck**  
3.87 in. long



**Extra Long Chuck**  
4.75 in. long



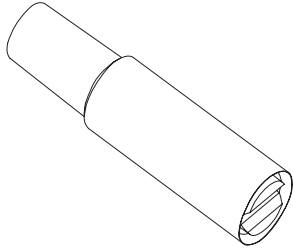
**Chuck Ejection Tool**  
for all Tapered Chucks  
Part Number CEK

Adjustable Chucks			
Stud Diameter	Standard Chuck	Long Chuck	Extra Long Chuck
	2.50 inches long	3.87 inches long	4.75 inches long
12ga	C10		
#4	C10		
1/8	C12		
10ga	C13	CL13	CEL13
#6	C13	CL13	CEL13
#8	C16	CL16	CEL16
#10	C19	CL19	CEL19
3/16	C19	CL19	CEL19
1/4	C25	CL25	CEL25
5/16	C31	CL31	CEL31
3/8	C37	CL37	CEL37
7/16	C43	CL43	CEL43
1/2	C50	CL50	CEL50
9/16	C56		
5/8	C62	CL62	CEL62
0.680	C68		
3/4	C75	CL75	CEL75
7/8	C87		
1	C1		
Metric Adjustable Chucks			
2mm	CM2		
3mm	CM3		
4mm	CM4	CLM4	
5mm	CM5	CLM5	
6mm	CM6	CLM6	
8mm	CM8	CLM8	CELM8
10mm	CM10		CELM10
12mm	CM12		

Each chuck comes with an internal, adjustable depth stop. All chucks have chamfered ends for easy stud insertion. The standard chuck is the most widely used chuck suitable for use in drawn arc, CD and stored arc applications. These chucks have a #2 Morse taper which will fit a variety of stud guns. NOTE: Long and extra long chucks don't have longer throat depths. They should be used as an extension to help reach difficult spots.

# ADJUSTABLE CHUCKS *Specialty*

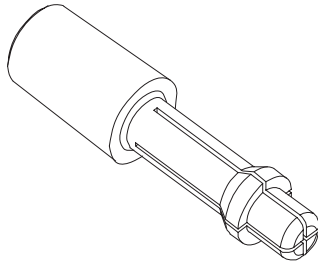
## Rectangular Chuck



Stud Dimensions	Part Number
1/8 x 1/4	C1225
1/8 x 3/8	C1237
1/8 x 5/8	C1262
1/8 x 7/8	C1287
1/8 x 1	C121

For Rectangular Studs only. See Specialty Studs for Rectangular Studs.

## Male Chuck



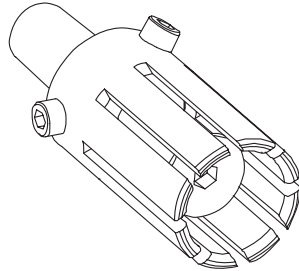
Hole Diameter	Part Number	Hole Diameter	Part Number
#8-32	CM16	3/8	CM37
#10-32	CM19	1/2-13	CM5013
1/4	CM25	1/2	CM50
1/4-20	CM2520	5/8-11	CM6211
5/16-18	CM3118	5/8	CM62
3/8-16	CM3716	3/4-10	CM7510

This chuck is used on tapped pads or other studs which are internally tapped.

# ADJUSTABLE CHUCKS *Specialty*



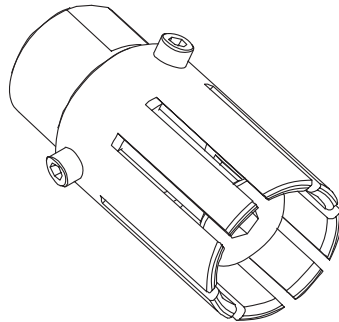
## Headed Anchor Chuck



Stud Diameter	Part Number
3/8	CH37
1/2	CH50

This chuck has a standard Morse taper and fits standard, or heavy duty chuck adapters.

## Shear Connector Chuck



Stud Diameter	Part Number
5/8	CH62
3/4	CH75
7/8	CH87

This chuck is internally threaded on the end and connects to a spud.

A R C A C C E S S O R I E S