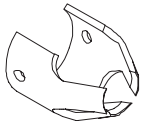


FERRULE GRIPS *Standard*

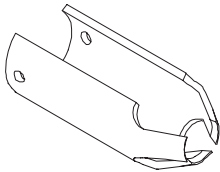
Brass Alloy Ferrule Grip



Standard Ferrule Grip
1 in. long



Split Ferrule Grip
1 in. long

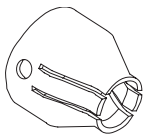


Long Split Ferrule Grip
2 in. long

Stud Size	Required Foot	Grip Diameter	Standard Ferrule Grip	Split Ferrule Grip	Long Split Ferrule Grip
			1 in long	1 in long	2 in long
#10	Small	0.305	G19	GS19	
3/16	Small	0.305	G19	GS19	
1/4	Small	0.380	G25	GS25	GLS25
5/16	Small	0.445	G31	GS31	GLS31
3/8	Small	0.505	G37	GS37	GLS37
7/16	Small	0.585	G43	GS43	GLS43
1/2	Small	0.650	G50	GS50	GLS50
5/8	Medium	0.785	G62	GS62	GLS62
3/4	Medium	1.030	G75	GS75	GLS75
7/8	Large	1.203	G87	GS87	
1	Large	1.406	G1	GS1	

Brass alloy ferrule grips are harder and last longer than copper ferrule grips. Split grips are typically used with Headed Anchors and Shear Connectors. Long grips can improve access to tight spots where a foot and short grip might not reach.

Copper Ferrule Grip



Copper Ferrule Grip
1 in. long

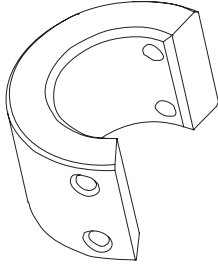
Stud Size	Required Foot	Grip Diameter	Copper Ferrule Grip
			1 in long
1/4	Small	0.380	GC25
5/16	Small	0.445	GC31
3/8	Small	0.505	GC37
7/16	Small	0.585	GC43
1/2	Small	0.650	GC50

Copper ferrule grip information is only provided as a reference. If you use a copper ferrule grip part number Image will substitute the equivalent brass grip above.



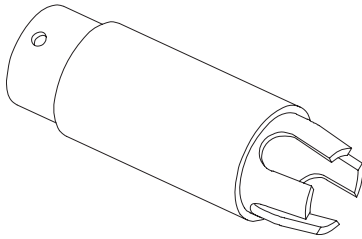
FERRULE GRIPS *Specialty*

Shear Connector Ferrule Grip



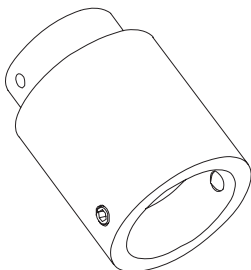
Stud Size	Part Number
1/2	GSC50
5/8	GSC62
3/4	GSC75
7/8	GSC87

Teflon Tube Adapter



Stud Size	Required Foot	Grip Diameter	Part Number
1/4	Small	0.380	TTA25
5/16	Small	0.445	TTA31
3/8	Small	0.505	TTA37
7/16	Small	0.585	TTA43
1/2	Small	0.650	TTA50

Template Tube Ferrule Grip Adapter



Adapter Size	Stud Size	Required Foot	Main Body Diameter	Part Number
Small	1/8-1/2	small	1 1/4	TTFGAS
Medium	9/16-3/4	medium	1 1/2	TTFGAM
Large	7/8-1	Large	2 1/8	TTFGAL

A R C A C C E S S O R I E S