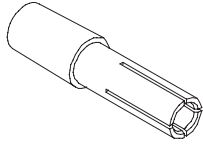




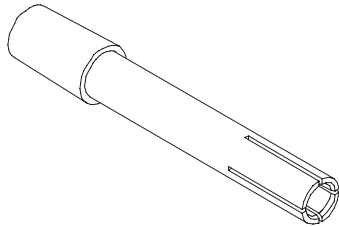
# ADJUSTABLE CHUCKS *Standard*

## Standard, Long & Extra Long Chucks

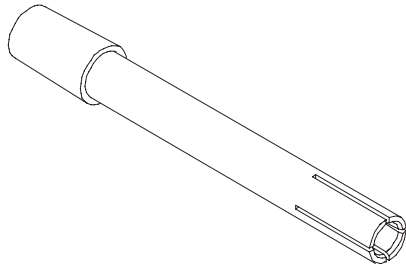
C  
D  
A  
C  
C  
E  
S  
S  
O  
R  
I  
E  
S



**Standard Chuck**  
2.50 in. long



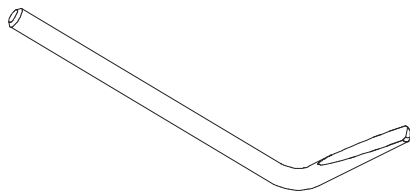
**Long Chuck**  
3.87 in. long



**Extra Long Chuck**  
4.75 in. long

Stud Diameter	Standard Chuck	Long Chuck	Extra Long Chuck
	2.50 inches long	3.87 inches long	4.75 inches long
12ga	C10		
#4	C10		
1/8	C12		
10ga	C13	CL13	CEL13
#6	C13	CL13	CEL13
#8	C16	CL16	CEL16
#10	C19	CL19	CEL19
3/16	C19	CL19	CEL19
1/4	C25	CL25	CEL25
5/16	C31	CL31	CEL31
3/8	C37	CL37	CEL37
Metric Adjustable Chucks			
2mm	CM2		
3mm	CM3		
4mm	CM4	CLM4	
5mm	CM5	CLM5	
6mm	CM6	CLM6	
8mm	CM8	CLM8	CELM8

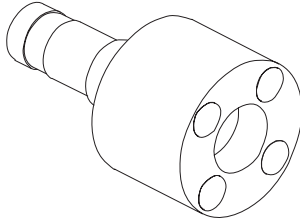
Each chuck comes with an internal, adjustable depth stop. All chucks have chamfered ends for easy stud insertion. The standard chuck is the most widely used chuck suitable for use in drawn arc, CD and stored arc applications. These chucks have a #2 Morse taper which will fit a variety of stud guns. NOTE: Long and extra long chucks don't have longer throat depths. They should be used as an extension to help reach difficult spots.



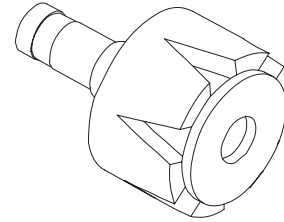
**Chuck Ejection Tool**  
for all Tapered Chucks  
Part Number CEK



## Magnetic Chucks

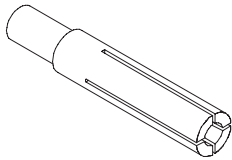


**Permanent  
Magnetic Chuck**  
Part Number CACHP



**Rebuildable  
Magnetic Chuck**  
Part Number CACHPR

## Collet Inserts

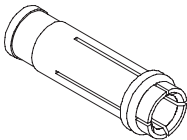


**Shank Diameter**  
0.250 inches  
These inserts can also be used with a Morse Taper Adapter (CA25) for additional flexibility.

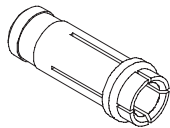
Stud Diameter	Stud Length				
	1/4	3/8	1/2	3/4	1
12 ga			CLIJ10-50	CLIJ10-75	CLIJ10-1
#4	CLIJ10-25	CLIJ10-37	CLIJ10-50	CLIJ10-75	CLIJ10-1
1/8	CLIJ12-25	CLIJ12-37	CLIJ12-50	CLIJ12-75	CLIJ12-1
#6	CLIJ13-25	CLIJ13-37	CLIJ13-50	CLIJ13-75	CLIJ13-1
#8	CLIJ16-25	CLIJ16-37	CLIJ16-50	CLIJ16-75	CLIJ16-1
#10	CLIJ19-25	CLIJ19-37	CLIJ19-50	CLIJ19-75	CLIJ19-1
1/4	CLIJ25-25	CLIJ25-37	CLIJ25-50	CLIJ25-75	CLIJ25-1
5/16		CLIJ31-37	CLIJ31-50	CLIJ31-75	CLIJ31-1
3/8			CLIJ37-50	CLIJ37-75	CLIJ37-1

# COLLETS *Standard*

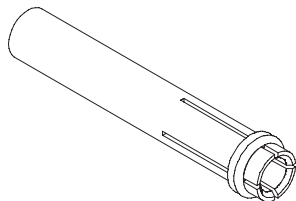
## Jones, AGM and Nelson Styles



**Jones Style**  
1.37 inches long  
Shank Diameter .375



**AGM Style**  
1.18 inches long  
Shank Diameter .375



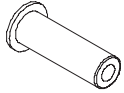
**Nelson Style**  
2.37 inches long

Stud Diameter	AGM Style 1.18" Long	Jones Style 1.37" Long	Nelson Style 2.37" Long
14 ga	CLA8	CLJ8	
12 ga	CLA10	CLJ10	
#4	CLA10	CLJ10	CLN10
1/8	CLA12	CLJ12	CLN10
10 ga	CLA13	CLJ13	CLN13
#6	CLA13	CLJ13	CLN13
#8	CLA16	CLJ16	CLN16
#10	CLA19	CLJ19	CLN19
1/4	CLA25	CLJ25	CLN25
5/16	CLA31	CLJ31	CLN31
3/8	CLA37	CLJ37	CLN37
Metric			
3mm	CLAM3	CLJM3	CLNM3
4mm	CLAM4	CLJM4	CLNM4
5mm	CLAM5	CLJM5	CLNM5
6mm	CLAM6	CLJM6	CLNM6
8mm	CLAM8	CLJM8	CLNM8

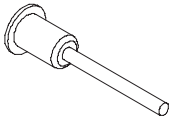


**Standard Stops**

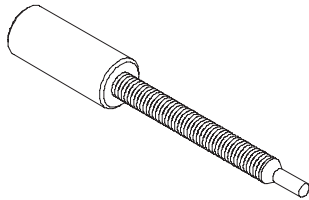
**C D A C C E S S O R I E S**



**Button Stop**  
Figure A



**Long Pin Stop**  
Figure B



**Nelson Style**

Stud Length	Figure	Part Number
1/4	B	DSJ25
3/8	B	DSJ37
1/2	A	DSJ50
5/8	A	DSJ62
3/4	A	DSJ75
7/8	A	DSJ87
1"	A	DSJ1
1 1/8	A	DSJ112
1 1/4	A	DSJ125
1 3/8	A	DSS
Universal	B	DSU

Stud Length	Part Number
1/4 - 5/8	DSN62
3/4 - 1 1/8	DSN112
1 1/4 - 1 5/8	DSN162
1 3/4 - 2 1/8	DSN212
Insulator Only	DSNI